



Swedish Competence Research Centres

within the Transport Sector
and funded by VINNOVA

STRONG SWEDISH COMPETENCE RESEARCH CENTRES

Internationally strong research and innovation milieus (R&I milieus) are one of the most important competitive factors in the face of global competition. This is why all of VINNOVA's activities are guided by the ambition to develop and further develop strong research and innovation environments.

For small and internationally dependent countries like Sweden, the need to focus its efforts on a number of strong, internationally distinguished R&I milieus is a critical factor in the effort to promote growth. It is a question of creating a number of globally-recognised spearheads so that Sweden can become an attractive partner for both companies and R&D investments.

VINNOVA's Competence Research Centres provide a forum for collaboration between the private and public sectors, universities and colleges, research institutes and other organisations that conduct research.

The Centres deal with both basic and applied research and they work to ensure that new knowledge and new technological developments lead to new products, processes and services.

The Centres provide

- Active collaboration between the public sector, business and academia
- Long-term partnership with extensive stage-by-stage evaluations
- Research programmes designed and carried out jointly by the participants
- Multi-disciplinary, internationally leading research
- Geographic focus by having a college or university as the organisational centre
- Co-financing by all participants (cash and/or in kind)
- Total budget of € 23 million for 10 years, of which € 7 million is grant from VINNOVA.

Presented here are a number of Centres within the Transport Sector funded by VINNOVA.

For more information visit VINNOVA's website www.VINNOVA.se

CENTRE FOR TRANSPORT STUDIES

Transport policy and evaluation

Systems analytic approaches to planning and designing efficient and sustainable transport systems by:

- Transport modelling
- Cost-benefit analysis
- Travellers' behaviour and valuations
- Financing and organisation.

Contact:

Jonas Eliasson, jonas.eliasson@infra.kth.se
www.kth.se/abe/centra/cts





THE SERVICE AND MARKET ORIENTED TRANSPORT RESEARCH GROUP

Combining the individual's requirements with society's goals

SAMOT contribute to the long-term sustainable development of passenger transportation services through multidisciplinary research in active collaboration with trade and industry, public sector players, and universities.

Contact:

Markus Fellesson, Markus.Fellesson@kau.se
<http://www.kau.se/samot/>





ECO² VEHICLE DESIGN

... where ECOlogy and ECONomy meet.

Research within

- Structural mechanics
- Noise and vibration
- Vehicle dynamics
- Aerodynamics
- Biomechanics.

Contact:

Annika Stensson Trigell, KTH, annika@kth.se
www.eco2vehicledesign.kth.se



VEHICLE AND TRAFFIC SAFETY CENTRE AT CHALMERS

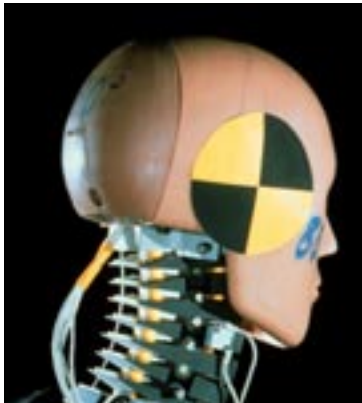
Research for traffic and vehicle safety

Four areas, different perspectives, towards the same goals:

- Pre-Crash Safety
- Crash Safety
- Post-Crash Safety
- Traffic Safety Analysis.

Contact:

Director: Anna Nilsson-Ehle, anna.nilsson-ehle@chalmers.se
www.chalmers.se/safer/EN/contact



TEST SITE SWEDEN

Providing demonstrations and test environments for the next generation of vehicle technology.

Test Site Sweden is planning several environmental test activities such as providing electrical charging stations, field operational tests of alternative fuels, multi-fuel filling stations and a traffic management center.

Contact:

Peter Öhman, peter.ohman@lindholmen.se
www.testsitesweden.eu



NEXT GENERATION INNOVATIVE LOGISTICS

Contributing to Swedish industry's competitive edge in logistic performance

The centre is focusing on the following research topics:

- Business models for innovative logistics
- Environment requirements on innovative logistics
- Technologies and methods for innovative logistics
- Innovative processes for innovative logistics on a company level.

Contact:

Mats Johansson, mats.johansson@ngil.se
www.NGIL.se



LIGHTHOUSE

A national strategic initiative for European competitiveness.

The mission is to contribute to a clean and safe globalisation through communication of new knowledge from multi-disciplinary way of work

Lighthouse's core values are

- Sustainability including both environment and working environment,
- Competitive shipping industry,
- Networking.

Lighthouse works in the following areas:

Business Ship, Cargo Ship, Eco Ship, Ergo Ship, Safe Ship.

Contact:

Anders Marby, anders.marby@cit.chalmers.se
www.chalmers.se/smt/lighthouse-en/ and/or
www.lighthouse.nu



Research and Innovation for Sustainable Growth

VINNOVA's main task is to finance needs-driven research and contribute to that research findings are used within industry and society.

This is accomplished by developing effective innovation systems including close co-operation between industry, academia and the political/public sector.

The goal is a sustainable growth in Sweden.



SWEDISH GOVERNMENTAL AGENCY FOR INNOVATION SYSTEMS

VINNOVA, SE-101 58 Stockholm, Sweden • Besök/Office: Mäster Samuelsgatan 56

Phone: +46 (0)8 473 30 00 • Fax: +46 (0)8 473 30 05

VINNOVA@VINNOVA.SE • WWW.VINNOVA.SE